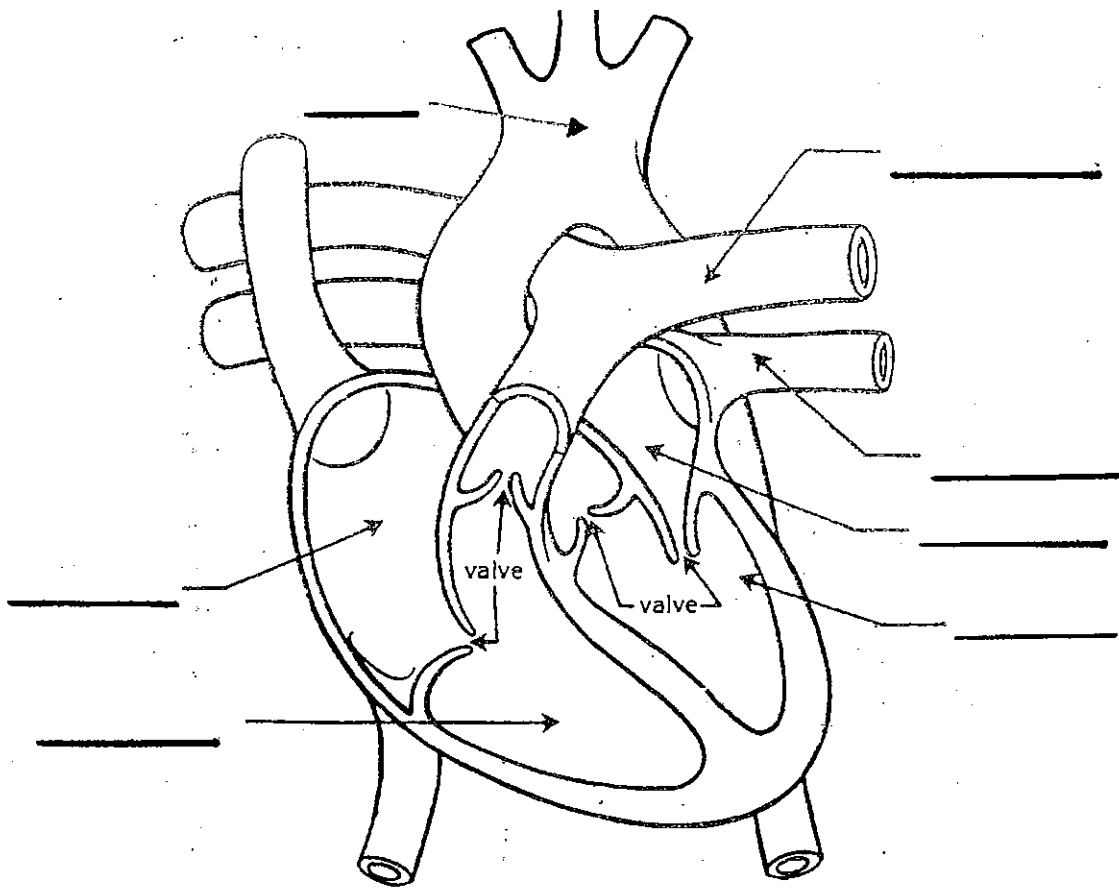


Circulatory System Study Guide



Fill in the blanks and draw arrows showing the flow of blood. Under the blanks indicate whether that part has oxygen-rich blood (ORB) or oxygen-poor blood (OPB)

Define:

1. Chamber (and name the 4) _____
2. Vein _____
3. Artery _____
4. Capillary _____
5. Oxygen-rich _____
6. Oxygen-poor _____
7. Aorta _____

Explain the function of:

1. Valves _____
2. Plasma _____
3. White Blood Cells _____
4. Red Blood Cells _____
5. Platelets _____